



Bring Dental 3D Printing to Your Desktop

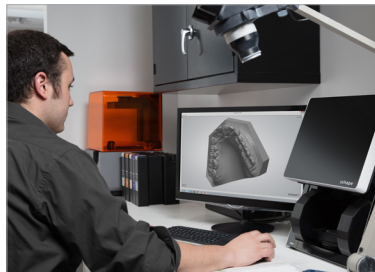
The Form 2's dental ecosystem brings industrial stereolithography (SLA) to orthodontic businesses of all sizes. Easy end-to-end workflows and the smallest footprint of any professional 3D printer enable rapid production of a wide range of dental products.

Applications



DIRECT-PRINTED APPLIANCES

Use Formlabs' Class IIa biocompatible material to efficiently produce splints, retainers, and other appliances. Dental LT Clear Resin has high strength, fracture resistance, and clarity.



DIAGNOSTIC AND EDUCATIONAL MODELS

Print patient scan data to examine, diagnose, and explain clinical cases. The Form 2 is equally at home in an office, a lab, and a university.



VACUUM-FORMED APPLIANCES

Use models to fabricate clear appliances like indirect bonding trays with a vacuum-forming machine, or add a separating layer and use the models to make retainers.

For more information or to request a demo,
please contact your local sales consultant