

**MINI SCREENS  
(TADS)**



Orlus Mini Implant System **H-3**  
Orlus Mini Implant and Accessories **H-5**

# Orlus Mini Implant System

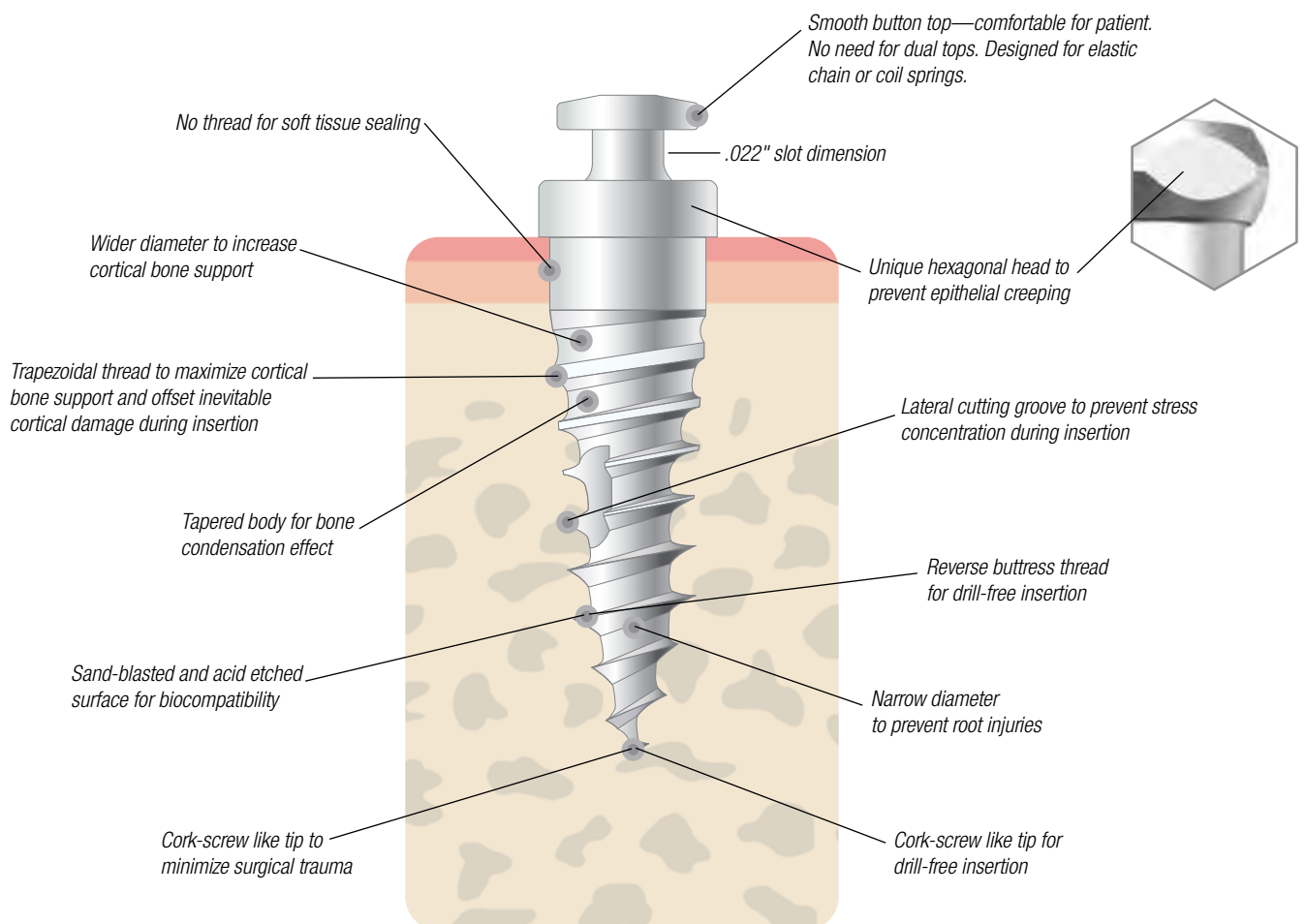
The Orlus Mini Implant\* features a unique design that is easy to use and provides higher success rates than other implant systems. Its titanium-alloy composition ensures biocompatibility, making it an optimum choice for providing additional anchorage and facilitating tooth movement.

The Orlus Mini Implant features a tapered core that widens with height, and a dual thread that consists of trapezoidal threads in the cervical area and reverse buttress threads in the apical area. Because of this unique structure, it can be inserted to a greater depth, providing more support from cortical bone.

The screw tip has been carefully engineered to be perfectly centered, ensuring that your implant ends up exactly where you want it.

## Designed For Enhanced Stability and Clinical Efficiency

- Not technique dependent
- Not site dependent
- Minimizes the influence of bone dependent conditions to improve success rate
- Thousands of completed clinical cases, providing significant backup research
- Minimizes the influence of operator skills to improve success rate



\*Orlus Mini Implant System is available for shipment/distribution in the United States only.

# Easy to use for a wide variety of applications.

Pre-drilling and making a flap is not necessary. Immediate loading is possible.



*In addition to the use of intra-arch applications, inter-maxillary elastic applications are also practical.*



*An extension arm is bonded to Orlus Implants for the scissor bite correction.*

There is a .022" size structure under the button.



*This space can be used for placement of the orthodontic wire.*



*The wire can be attached to the implant and tooth with flowable resins.*

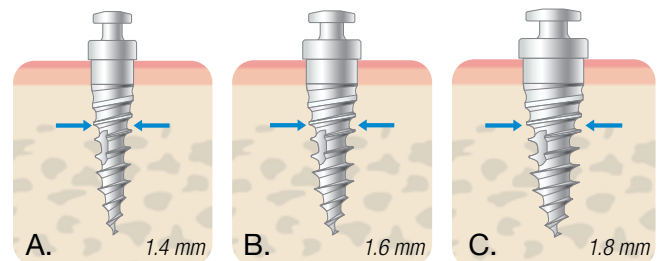


*Gives the individual tooth three-dimensional anchorage.*



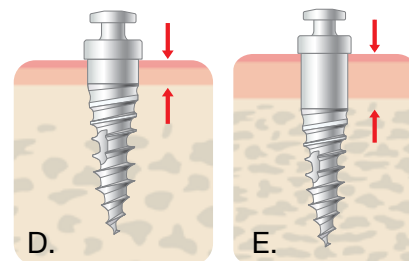
## Specifications and System Options

Select from three available widths, depending on amount of bone, and quality of bone.



- A. **Mini type:** Where abundant space is not available, such as at the anterior alveolus.
- B. **Regular type:** Used in general areas where the bone quality is adequate.
- C. **Wide type:** Used in general areas, and in areas of inadequate bone quality.

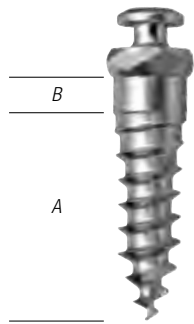
Select from three available lengths depending on soft tissue thickness.



- D. **Regular type:** Used in general areas where the soft tissue is not thick.
- E. **Long type:** Designed for the site where the soft tissue is thick, such as palatal alveolus area. This can be used for the site where the soft tissue is movable to expose the head sufficiently.

*\*Orlus Mini Implant System is available for shipment/distribution in the United States only.*

## Orlus Mini Screws (2 per pack)



Refer to A and B in chart to right.

DESCRIPTION	DIAMETER DIMENSIONS A x B	LENGTH B + A	ITEM NO.
Anterior Alveolus	1.4 x 1.6 mm	1.0+6.0 mm	3400-114
Mx/Mn Labial Area, Mx/Mn Buccal Area, Midpalatal Suture Area	1.6 x 1.9 mm	1.0+6.0 mm	3400-101
Buccal Shelf, Retromolar Area, Palatal Alveolus Area	1.6 x 1.9 mm	2.0+6.0 mm	3400-102
Mx/Mn Buccal Area	1.8 x 2.2 mm	1.0+5.0 mm	3400-103
Mx/Mn Buccal Area	1.8 x 2.2 mm	1.0+6.0 mm	3400-104
Buccal Shelf, Retromolar Area, Palatal Alveolus Area	1.8 x 2.2 mm	2.0+6.0 mm	3400-105
For 3-4 mm Thick Soft Tissue	1.8 x 2.2 mm	3.0+6.0 mm	3400-106

Each mini implant is sterilized and packaged in individual tubes. Mini implants are non-returnable.

## Orlus Surgical Driver Tips

Standard driver tips for indirect implantation. Used with contra angle hand driver.

DESCRIPTION	ITEM NO.
Short Driver Tip	3400-109
Long Driver Tip	3400-110



## Orlus Surgical Hand Pre-Drill Tips

Used to minimize surgical trauma during implantation and to prevent root injuries.

- Short surgical pre-drill tip is used with contra angle hand driver in palatal alveolus area.
- Long surgical pre-drill tip is used with contra angle hand driver in midpalatal area.



DESCRIPTION	DIMENSIONS	ITEM NO.
Short Surgical Pre-Drill Tip	∅±1.05 x 2.0 x 24.7 mm	3400-112
Long Surgical Pre-Drill Tip	∅±1.05 x 2.0 x 34.7 mm	3400-113

## Contra Angle Hand Driver Handle

Angle allows access to hard-to-reach areas.

ITEM NO.
3400-125



## Variable Force Coil Springs

Specially-sized eyelets for use with Orlus Implants.

- 3 per pack

DIMENSIONS	ITEM NO.
6 mm (10 x 30)	3400-116
9 mm (10 x 30)	3400-117
12 mm (10 x 30)	3400-118



MASEL provides coil springs specially made to fit Orlus Mini Implants.

\*Orlus Mini Implant System is available for shipment/distribution in the United States only.



## Orlus Standard Hand Driver Handle



ITEM NO.  
3400-107

## Orlus Standard Hand Driver Tip



ITEM NO.  
3400-108

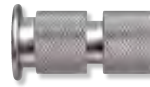
## Orlus Surgical Hand Pre-Drill Tip

Use with standard hand driver for direct implantation. Designed to minimize surgical trauma and prevent root injuries.



DESCRIPTION	DIMENSIONS	ITEM NO.
Surgical Hand Pre-Drill Tip	$\varnothing \pm 1.05 \times 2.0 \times 64.4 \text{ mm}$	3400-111

## Orlus Small Hand Driver Handle



ITEM NO.  
3400-122

## Orlus Small Hand Driver Tip



ITEM NO.  
3400-123

## Orlus Autoclavable Container

Housing unit for complete system.

ITEM NO.  
3400-115

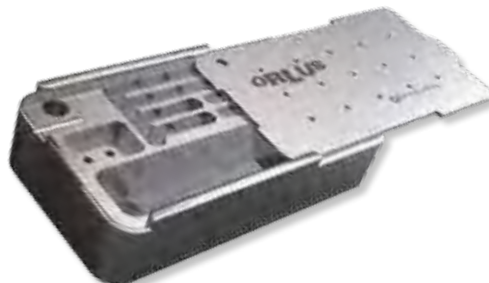


## Standard Hand Driver Kit



Kit includes:

- 1 Standard Hand Driver Handle
- 1 Standard Hand Driver Tip
- 1 Surgical Hand Pre-Drill Tip
- 1 Autoclavable Container



ITEM NO.  
3400-119

\*Orlus Mini Implant System is available for shipment/distribution in the United States only.