

What is the ?

Motion Appliance



Utilizing the latest in advanced orthodontic technology, the *Motion Appliance* ensures a fast, effective, and aesthetic first phase treatment. Plus, by jumpstarting your orthodontic care with the *Motion Appliance*, your overall treatment time is reduced, which means less time in braces.

Normal treatment time for the appliance is 3 to 5 months, but it can differ depending on your orthodontic case. When the desired movement is reached, your orthodontist will remove the appliance and will place your braces or aligners to complete your orthodontic care.

A beautiful smile enhances your quality of life and is an investment that lasts a lifetime. Let us and your orthodontic professional show you how easy it is to obtain your desired smile with the *Motion Appliance*.

CARRIERE® MOTION™ CLASS II CORRECTION APPLIANCE

"Patient Friendly Treatment"



For more information on our products and educational offerings, please contact us:
HenryScheinOrtho.com
Customer Service: 888.851.0533
In the U.S.: 800.547.2000
Outside the U.S.: +(1) 760 448 8600
Canada: CERUM 800.661.9567



HENRY SCHEIN®
ORTHODONTICS

The New Movement In Orthodontics™



Ortho Organizers, Inc.
1822 Aston Ave.
Carlsbad, CA 92008-7306 USA

© 2015 Ortho Organizers, Inc. All rights reserved. PN 999-257 02/15. U.S. Patent No. 7,618,257, 6,976,839, and 7,238,022 and foreign patents.

Motion

Class II Correction Appliance



With the *Motion* Appliance, achieving a beautiful smile in the shortest possible time has never been so easy. This sleek, comfortable Class II correction appliance was designed with you, the patient, in mind.

Motion

Class II Correction Appliance

Benefits for You!

Shorter Treatment Time

The appliance is placed before your braces are put into place for faster movement of teeth and less time in braces.

Elastics Early On

Elastics are worn at the beginning of treatment when you are excited to start orthodontic treatment, rather than at the end when you are ready for your braces to come off.

Aesthetically Pleasing

Unique design makes the appliance hardly noticeable in your mouth.

Normal Speech

The quality of your speech is not affected unlike when wearing other traditional orthodontic appliances.

No Facial Appliance Needed

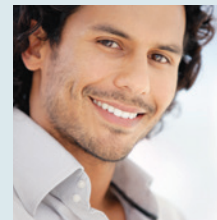
Avoid the bulky feeling from alternative solutions which are more invasive, such as headgear, and worn outside the mouth.

Sleek, Low-Profile Design

The low profile and smooth surface makes it comfortable to wear; there is no poking of the lips/cheeks.

Good Oral Hygiene

The appliance is easy to clean, plus it is also easy to brush your teeth to keep your mouth free of debris, resulting in good oral hygiene.

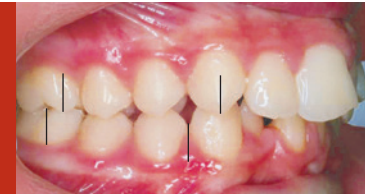


Motion

Class II Correction Appliance

The patient-friendly *Motion* Appliance is bonded to your teeth in the first phase of orthodontic treatment.

Before
Treatment



Moving your teeth faster and more aesthetically than other traditional Class II correction appliances.

Bonded



So, with less time in braces and less discomfort, you will have the beautiful smile you've always wanted in no time.

After

