

Carriere® SLX™ Bracket System

Prescriptions and Ordering Information.

ALL PRESCRIPTIONS*

| | CENTRALS | | | LATERALS | | | CUSPIDS | | | 1ST BICUSPIDS | | | 2ND BICUSPIDS | | |
|----------------------------------|----------|------|-----------|----------|------|-----------|---------|---------|-----------|---------------|------|-----------|---------------|------|-----------|
| | TRO. | ANG. | ANTI-ROT. | TRO. | ANG. | ANTI-ROT. | TRO. | ANG. | ANTI-ROT. | TRO. | ANG. | ANTI-ROT. | TRO. | ANG. | ANTI-ROT. |
| MAXILLARY | | | | | | | | | | | | | | | |
| Optimized Damon High Torque | +17° | +4° | 0° | +10° | +8° | 0° | +7° | +8° | 0° | -7° | 0° | 0° | -7° | 0° | 0° |
| Optimized Damon Standard Torque | +12° | +5° | 0° | +8° | +9° | 0° | 0° | +6° | 0° | -7° | 0° | 0° | -7° | 0° | 0° |
| McLaughlin, Bennett, and Trevisi | +17° | +4° | 0° | +10° | +8° | 0° | -7°/0° | +9°/+6° | 0° | -7° | 0° | 0° | -7° | 0° | 0° |
| Roth | +12° | +5° | 0° | +8° | +9° | 0° | -2° | +9° | +4M° | -7° | 0° | +2D° | -7° | 0° | +2D° |
| MANDIBULAR | | | | | | | | | | | | | | | |
| Optimized Damon High Torque | -1° | 0° | 0° | -1° | 0° | 0° | +7° | +4° | 0° | -12° | +2° | 0° | -17° | +2° | 0° |
| Optimized Damon Standard Torque | -1° | 0° | 0° | -1° | 0° | 0° | 0° | +5° | 0° | -12° | +2° | 0° | -17° | +2° | 0° |
| McLaughlin, Bennett, and Trevisi | -6° | 0° | 0° | -6° | 0° | 0° | -6°/0° | +4°/+5° | 0° | -12° | +2° | 0° | -17° | +2° | 0° |
| Roth | -1° | 0° | 0° | -1° | 0° | 0° | -11° | +5° | +2M° | -17° | +2° | +4D° | -22° | +2° | +4D° |

ALL KITS*

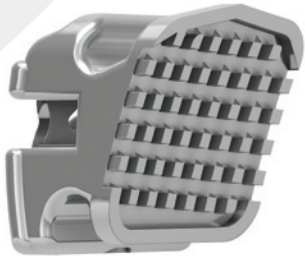
| Rx | OPTION | QTY. OF SETS. | TOTAL BRACKETS | ITEM NUMBERS | |
|----------------------------------|-----------------------------------------|---------------|----------------|--------------|-----------|
| | | | | .018 | .022 |
| Optimized Damon High Torque | U/L 5x5 kit with no hooks | 1 | 20 | - | 713-397HT |
| | U/L 5x5 kit with hooks on 3's | 1 | 20 | - | 713-398HT |
| | U/L 5x5 kit with hooks on 3's, 4's, 5's | 1 | 20 | - | 713-399HT |
| Optimized Damon Standard Torque | U/L 5x5 kit with no hooks | 1 | 20 | - | 713-397ST |
| | U/L 5x5 kit with hooks on 3's | 1 | 20 | - | 713-398ST |
| | U/L 5x5 kit with hooks on 3's, 4's, 5's | 1 | 20 | - | 713-399ST |
| McLaughlin, Bennett, and Trevisi | U/L 5x5 kit with no hooks | 1 | 20 | - | 713-397MC |
| | U/L 5x5 kit with hooks on 3's | 1 | 20 | - | 713-398MC |
| | U/L 5x5 kit with hooks on 3's, 4's, 5's | 1 | 20 | - | 713-399MC |
| Roth | U/L 5x5 kit with no hooks | 1 | 20 | - | 713-397 |
| | U/L 5x5 kit with hooks on 3's | 1 | 20 | - | 713-398 |
| | U/L 5x5 kit with hooks on 3's, 4's, 5's | 1 | 20 | - | 713-399 |

SLX Prescriptions and Ordering Information Continued

OPTIMIZED DAMON PRESCRIPTIONS* (10 PER PACK)

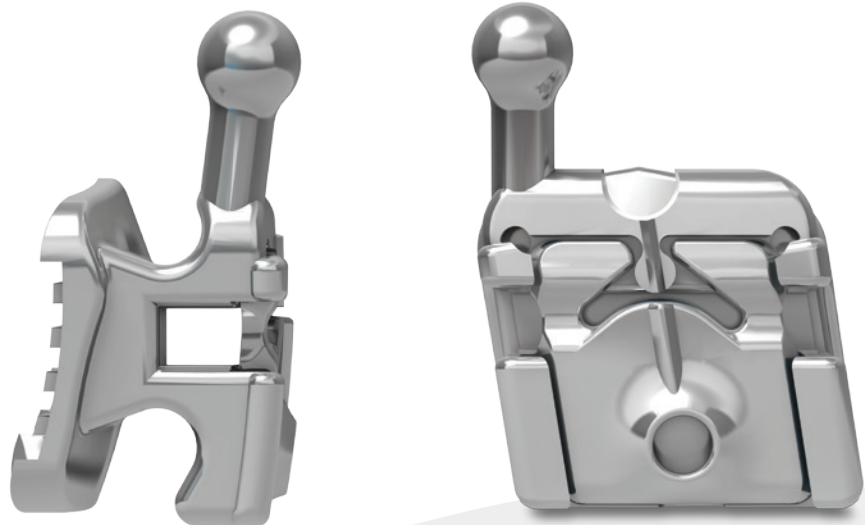
| | | | | | | | | ITEM NUMBERS | |
|-------------------|------|------------|--------|----------------|------|------|---------------|--------------|--------------|
| | DESC | COLOR-CODE | TOOTH# | VARIABLE | TRO. | ANG. | ANTI-ROTATION | .022 R | .022 L |
| MAXILLARY | | | | | | | | | |
| Centrals | - | Black | U1 | Super | +22° | +5° | 0° | 713-305-10 | 713-306-10 |
| | - | Black | U1 | High | +17° | +4° | 0° | 713-309-10 | 713-310-10 |
| | - | Black | U1 | Standard | +12° | +5° | 0° | 713-307-10 | 713-308-10 |
| Laterals | - | Pink | U2 | Super | +14° | +9° | 0° | 713-319-10 | 713-320-10 |
| | - | Pink | U2 | High | +10° | +8° | 0° | 713-327-10 | 713-328-10 |
| | - | Pink | U2 | Standard | +8° | +9° | 0° | 713-323-10 | 713-324-10 |
| Cuspids | - | Green | U3 | High | +7° | +8° | 0° | 713-349-10 | 713-350-10 |
| | Hook | Green | U3 | High | +7° | +8° | 0° | 713-349HK-10 | 713-350HK-10 |
| | - | Green | U3 | Standard | 0° | +6° | 0° | 713-355-10 | 713-356-10 |
| | Hook | Green | U3 | Standard | 0° | +6° | 0° | 713-355HK-10 | 713-356HK-10 |
| | - | Green | U3 | Low | -7° | +9° | 0° | 713-353-10 | 713-354-10 |
| | Hook | Green | U3 | Low | -7° | +9° | 0° | 713-353HK-10 | 713-354HK-10 |
| Bicuspids | - | Purple | U4&5's | - | -7° | 0° | 0° | 713-357-10 | 713-358-10 |
| | Hook | Purple | U4&5's | - | -7° | 0° | 0° | 713-357HK-10 | 713-358HK-10 |
| MANDIBULAR | | | | | | | | | |
| Anteriors | - | Yellow | L1&2's | Super | +3° | 0° | 0° | 713-333-10 | 713-333-10 |
| | - | Yellow | L1&2's | High & Std | -1° | 0° | 0° | 713-335-10 | 713-335-10 |
| | - | Yellow | L1&2's | Low | -6° | 0° | 0° | 713-337-10 | 713-337-10 |
| Cuspids | - | Blue | L3 | High | +7° | +4° | 0° | 713-363-10 | 713-364-10 |
| | Hook | Blue | L3 | High | +7° | +4° | 0° | 713-363HK-10 | 713-364HK |
| | - | Blue | L3 | Standard & Low | 0° | +5° | 0° | 713-373-10 | 713-374-10 |
| | Hook | Blue | L3 | Standard & Low | 0° | +5° | 0° | 713-373HK-10 | 713-374HK-10 |
| 1st Bicuspids | - | Gray | L4 | - | -12° | +2° | 0° | 713-387-10 | 713-388-10 |
| | Hook | Gray | L4 | - | -12° | +2° | 0° | 713-387HK-10 | 713-388HK-10 |
| 2nd Bicuspids | - | White | L5 | - | -17° | +2° | 0° | 713-391-10 | 713-392-10 |
| | Hook | White | L5 | - | -17° | +2° | 0° | 713-391HK-10 | 713-392HK-10 |

*The Optimized Damon prescription is similar to the Damon MX prescription offered by Ormco and does not imply endorsement by the doctor(s).



MCLAUGHLIN, BENNETT, AND TREVISI PRESCRIPTIONS* (10 PER PACK)

| | | | | | | | ITEM NUMBERS | |
|-------------------|-------|------------|--------|------|------|---------------|--------------|--------------|
| | DESC. | COLOR-CODE | TOOTH# | TRO. | ANG. | ANTI-ROTATION | .022 R | .022 L |
| MAXILLARY | | | | | | | | |
| Centrals | - | Black | U1 | +17° | +4° | 0° | 713-309-10 | 713-310-10 |
| Laterals | - | Pink | U2 | +10° | +8° | 0° | 713-327-10 | 713-328-10 |
| Cuspids | - | Green | U3 | -7° | +9° | 0° | 713-353-10 | 713-354-10 |
| | Hook | Green | U3 | -7° | +9° | 0° | 713-353HK-10 | 713-354HK-10 |
| | - | Green | U3 | 0° | +6° | 0° | 713-355-10 | 713-356-10 |
| | Hook | Green | U3 | 0° | +6° | 0° | 713-355HK-10 | 713-356HK-10 |
| Bicuspids | - | Purple | U4&5's | -7° | 0° | 0° | 713-357-10 | 713-358-10 |
| | Hook | Purple | U4&5's | -7° | 0° | 0° | 713-357HK-10 | 713-358HK-10 |
| MANDIBULAR | | | | | | | | |
| Anteriors | - | Yellow | L1&2's | -6° | 0° | 0° | 713-337-10 | 713-337-10 |
| Cuspids | - | Blue | L3 | -6° | +4° | 0° | 713-371-10 | 713-372-10 |
| | Hook | Blue | L3 | -6° | +4° | 0° | 713-371HK-10 | 713-372HK-10 |
| | - | Blue | L3 | 0° | +5° | 0° | 713-373-10 | 713-374-10 |
| | Hook | Blue | L3 | 0° | +5° | 0° | 713-373HK-10 | 713-374HK-10 |
| 1st Bicuspids | - | Gray | L4 | -12° | 2° | 0° | 713-387-10 | 713-388-10 |
| | Hook | Gray | L4 | -12° | 2° | 0° | 713-387HK-10 | 713-388HK-10 |
| 2nd Bicuspids | - | White | L5 | -17° | 2° | 0° | 713-391-10 | 713-392-10 |
| | Hook | White | L5 | -17° | 2° | 0° | 713-391HK-10 | 713-392HK-10 |



*Ortho Organizers' prescription does not imply endorsement by the doctor(s).

ROTH PRESCRIPTION* (10 PER PACK)

| | | | | | | | ITEM NUMBERS | | | |
|-------------------|-------|------------|--------|------|------|---------------|--------------|--------------|--------------|--------------|
| | DESC. | COLOR-CODE | TOOTH# | TRQ. | ANG. | ANTI-ROTATION | .018 R | .018 L | .022 R | .022 L |
| MAXILLARY | | | | | | | | | | |
| Centrals | - | Black | U1 | +12° | +5° | 0° | 713-207-10 | 713-208-10 | 713-307-10 | 713-308-10 |
| Laterals | - | Pink | U2 | +8° | +9° | 0° | 713-223-10 | 713-224-10 | 713-323-10 | 713-324-10 |
| Cuspids | - | Green | U3 | -2° | +9° | 4°M | 713-251-10 | 713-252-10 | 713-351-10 | 713-352-10 |
| | Hook | Green | U3 | -2° | +9° | 4°M | 713-251HK-10 | 713-252HK-10 | 713-351HK-10 | 713-352HK-10 |
| Bicuspid | - | Purple | U4&5's | -7° | 0° | 2°D | 713-259-10 | 713-260-10 | 713-359-10 | 713-360-10 |
| | Hook | Purple | U4&5's | -7° | 0° | 2°D | 713-259HK-10 | 713-260HK-10 | 713-359HK-10 | 713-360HK-10 |
| MANDIBULAR | | | | | | | | | | |
| Anteriors | - | Yellow | L1&2's | -1° | 0° | 0° | 713-235-10 | 713-235-10 | 713-335-10 | 713-335-10 |
| Cuspids | - | Blue | L3 | -11° | +5° | 2°M | 713-267-10 | 713-268-10 | 713-367-10 | 713-368-10 |
| | Hook | Blue | L3 | -11° | +5° | 2°M | 713-267HK-10 | 713-268HK-10 | 713-367HK-10 | 713-368HK-10 |
| 1st Bicuspid | - | White | L4 | -17° | +2° | 4°D | 713-289-10 | 713-290-10 | 713-389-10 | 713-390-10 |
| | Hook | White | L4 | -17° | +2° | 4°D | 713-289HK-10 | 713-290HK-10 | 713-389HK-10 | 713-390HK-10 |
| 2nd Bicuspid | - | Red | L5 | -22° | +2° | 4°D | 713-293-10 | 713-294-10 | 713-393-10 | 713-394-10 |
| | Hook | Red | L5 | -22° | +2° | 4°D | 713-293HK-10 | 713-294HK-10 | 713-393HK-10 | 713-394HK-10 |



For more information on our products and educational offerings, please contact us:
 HenryScheinOrtho.com
 Customer Service: 888.851.0533
 In the U.S.: 800.547.2000
 Outside the U.S.: +(1) 760 448 8600
 Canada: CERUM 800.661.9567

To email an order:
 USASales@HenryScheinOrtho.com
 To email an order outside the U.S.:
 IntlOrders@HenryScheinOrtho.com



HENRY SCHEIN®
 ORTHODONTICS

The New Movement In Orthodontics™

Ortho Organizers, Inc.
 1822 Aston Ave.
 Carlsbad, CA 92008-7306 USA