

Bite Guide™

REF 430-006

Instructions for Use

These one-piece appliances allow the practitioner to efficiently open a deep bite and/or advance the mandible. The appliance is bonded directly to the lingual side of the upper centrals via its patented anatomically contoured *Grip-LOK*® Base for enhanced bond strength. The appliance features smooth radiused edges for maximum patient comfort.

Bite Guides function as a fixed plane that the lower anteriors occlude against. The normal biting action allows the occlusion to be uncoupled and be positioned at the proper depth. In the process, the molars are no longer restricted by the bite and may occlude more freely to their proper position. The lower arch can also move mesially from a Class II to an ideal Class I relationship. When the lower anterior teeth contact the *Bite Guides*, an intrusive force is evenly distributed on the upper and lower incisors.

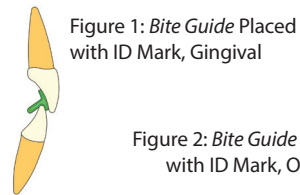
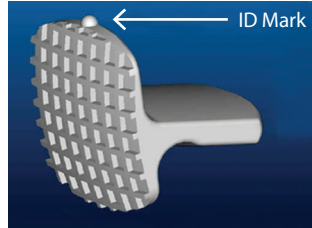


Figure 1: *Bite Guide* Placed with ID Mark, Gingival



Figure 2: *Bite Guide* Placed with ID Mark, Occlusal

Bite Guides can be positioned in two different ways depending on the movement required. A raised ID mark identifies the biting surface position for the doctor.

1. ID Mark Gingival: Deep bite correction with 3 or less millimeters of space and more rapid mandibular advancement desired. (Figure 1)
2. ID Mark Occlusal: Deep bite correction with 3-4 millimeters of space. (Figure 2)

PLACEMENT OF BITE GUIDES

1. Determine which way the ID Mark on the *Bite Guide* will reside (Gingival or Occlusal) on the upper centrals for the desired movement.
2. Place an adequate amount of *Illuminate*™ Light-Cured Adhesive on the *Grip-LOK* Base of the *Bite Guide*.
3. Place the *Bite Guide* firmly on the incisal third of the lingual surface of the maxillary central incisor.
4. Guide the patient to bite down gently on the *Bite Guide* until the desired bite-opening height is reached.
5. Remove any excess flash and light cure the *Bite Guide* in place.
6. Repeat procedure on the adjacent central incisor, placing the *Bite Guide* slightly more incisally.
7. Guide the patient to bite down gently until the exact level of the other *Bite Guide* is attained.
8. Check that the lower incisors occlude evenly with both *Bite Guide*.
9. Light cure at this position.
10. Check the newly established vertical dimension for accuracy and desired posterior clearance.

REMOVING BITE GUIDES

Use the *ENDURA*™ Direct Bond Bracket Remover part number #201-312 (or similar plier) to remove *Bite Guides*.



Ortho Organizers, Inc.
1822 Aston Avenue
Carlsbad, CA 92008
USA

Tel: 800.547.2000, +(1) 760 448 8600
Fax: 800.888.7244, +(1) 760 448 8607
USASales@HenryScheinOrtho.com
IntlOrders@HenryScheinOrtho.com



mdi Europa GmbH
Langenhagener Str. 71
30855 Langenhagen, Germany
49 511 39 08 9530



Made in the USA

INS134A
Rev C

Visit the *Henry Schein Orthodontics* website at HenryScheinOrtho.com
Symbols glossary provided electronically at HenryScheinOrtho.com/symbols

Bite Guide™

REF 430-006

Instructions for Use

These one-piece appliances allow the practitioner to efficiently open a deep bite and/or advance the mandible. The appliance is bonded directly to the lingual side of the upper centrals via its patented anatomically contoured *Grip-LOK*® Base for enhanced bond strength. The appliance features smooth radiused edges for maximum patient comfort.

Bite Guides function as a fixed plane that the lower anteriors occlude against. The normal biting action allows the occlusion to be uncoupled and be positioned at the proper depth. In the process, the molars are no longer restricted by the bite and may occlude more freely to their proper position. The lower arch can also move mesially from a Class II to an ideal Class I relationship. When the lower anterior teeth contact the *Bite Guides*, an intrusive force is evenly distributed on the upper and lower incisors.

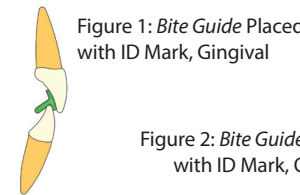
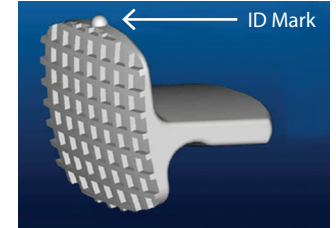


Figure 1: *Bite Guide* Placed with ID Mark, Gingival



Figure 2: *Bite Guide* Placed with ID Mark, Occlusal

Bite Guides can be positioned in two different ways depending on the movement required. A raised ID mark identifies the biting surface position for the doctor.

1. ID Mark Gingival: Deep bite correction with 3 or less millimeters of space and more rapid mandibular advancement desired. (Figure 1)
2. ID Mark Occlusal: Deep bite correction with 3-4 millimeters of space. (Figure 2)

PLACEMENT OF BITE GUIDES

1. Determine which way the ID Mark on the *Bite Guide* will reside (Gingival or Occlusal) on the upper centrals for the desired movement.
2. Place an adequate amount of *Illuminate*™ Light-Cured Adhesive on the *Grip-LOK* Base of the *Bite Guide*.
3. Place the *Bite Guide* firmly on the incisal third of the lingual surface of the maxillary central incisor.
4. Guide the patient to bite down gently on the *Bite Guide* until the desired bite-opening height is reached.
5. Remove any excess flash and light cure the *Bite Guide* in place.
6. Repeat procedure on the adjacent central incisor, placing the *Bite Guide* slightly more incisally.
7. Guide the patient to bite down gently until the exact level of the other *Bite Guide* is attained.
8. Check that the lower incisors occlude evenly with both *Bite Guide*.
9. Light cure at this position.
10. Check the newly established vertical dimension for accuracy and desired posterior clearance.

REMOVING BITE GUIDES

Use the *ENDURA*™ Direct Bond Bracket Remover part number #201-312 (or similar plier) to remove *Bite Guides*.



Ortho Organizers, Inc.
1822 Aston Avenue
Carlsbad, CA 92008
USA

Tel: 800.547.2000, +(1) 760 448 8600
Fax: 800.888.7244, +(1) 760 448 8607
USASales@HenryScheinOrtho.com
IntlOrders@HenryScheinOrtho.com



mdi Europa GmbH
Langenhagener Str. 71
30855 Langenhagen, Germany
49 511 39 08 9530



Made in the USA

INS134A
Rev C

Visit the *Henry Schein Orthodontics* website at HenryScheinOrtho.com
Symbols glossary provided electronically at HenryScheinOrtho.com/symbols